



1	.....	3
.....	..2002 6 29	
.....	..2014 8 31	
2	.....	13
.....	75 ..2014 12 31	
3	.....	24
.....	2015 295 ..2015 9 7	
4	.....	25
.....	2015 352 ..2015 12 2	
5	.....	29
.....	2009 35 ..2009 4 10	
6	.....	32
.....	2009 49 ..2009 10 9	
7	.....	36
.....	2014 63 ..2014 10 16	
8	.....	38
.....	2018 14 ..2018 4 25	
9	.....	45
.....	2015 63 ..2015 8 10	
10	.....	50
.....	2015 163 ..2015 9 15	

11	.....	53
.....	2014 165 ..2014 10 11	
12	.....	54
.....14	39 ..2016 6 24	
13	.....	59
.....	2017 1055 ..2017 6 1	
14	.....	61
.....	2018 4 ..2018 1 9	
15	.....	63
.....	2015 9 ..2015 4 21	
16	.....	67
.....	2007 51 ..2016 12 26	
17	.....	69
.....	..	
.....	2004 185 ..2004 12 17	
18	.....	71
.....	2017 3 ..2017 1 9	
19	.....	72
.....	2006 90 ..2006 10 24	
20	.....	73
.....	2007 119 ..2007 12 27	
21	.....	78
.....	2008 248 ..2008 7 9	
22	.....	81
.....	.. .. ..	
.....	.....	
.....	2010 48 ..2010 4 28	
23	.....	82
.....	.. ..	
.....	2005 366 ..2005 12 30	
24	.....	84
.....	..	
.....	2011 181 ..2011 12 29	
25	.....	87
.....	2011 124 ..2011 9 5	

26		88
.....	.....	.....
.....	2011 300 ..2011 6 18	.....
27		91
.....	2006 47 ..2006 6 13	.....
28		93
.....	2014 68 ..2014 6 10	.....
29		94
.....	2017 141 ..2017 8 22	.....
30		96
.....	.....	.....
.....	2016 35 ..2016 9 6	.....
31		99
.....	2015 123 ..2015 11 19	.....
32	2018 2019	107
.....	2017 49 ..2017 10 30	.....
33		117
.....	2013 96 ..2013 9 26	.....
34		121
.....	2014 37 ..2014 4 14	.....
35	.. .. ..	123
.....	2014 96 ..2014 12 15	.....
36		129
.....	2017 87 ..2017 5 28	.....
37		131
.....	2014 67 ..2014 7 16	.....
38		135
.....	2014 66 ..2014 8 18	.....

39		145
.....	.....	.....
.....	2015 42 ..2015 5 19	.....
40		151
.....	2014 215 ..2014 12 31	.....
41	..	155
.....	2017 50 ..2017 6 7	.....
42		161
.....	2017 210 ..2017 12 26	.....
43	. . .	164
.....	.....	.....
.....	2006 1 ..2006 3 30	.....
44		165
.....	2011 59 ..2011 4 13	.....
45		166
.....	2014 63 ..2014 12 8	.....
46		168
.....	2014 65 ..2014 8 8	.....
47		171
.....	2018 105 ..2018 8 10	.....
48	. . .	175
.....	.....	.....
.....	2017 15 ..2017 4 28	.....
49	.. ..	179
.....	.....	.....
.....	2017 3 ..2017 4 28	.....

50	.....	183
.....	87 ..2017 7 11	
51	.....	197
.....	74 ..2013 12 19	
52	.....	208
.....	2014 214 ..2014 12 31	
53	.....	215
.....	2015 124 ..2015 6 30	
54	.....	216
.....	2015 111 ..2015 5 28	
55	.....	217
.....	2017 46 ..2017 7 13	
56	.....	218
.....	2003 38 ..2003 4 14	
57	.....	219
.....	2015 17 ..2015 7 22	
58	.....	226
.....	2015 27 ..2015 9 17	
59	.....	228
.....	2015 36 ..2015 11 2	
60	.....	240
.....	2018 20 ..2018 3 12	
61	.....	245
.....	2017 97 ..2017 12 19	
62	.....	248
.....	19 ..2004 8 11	
63	.....	253
.....	2015 135 ..2015 7 17	

64	.....	258
.....	2017 86 ..2017 4 25	
65	.....	260
.....	2017 21 ..2017 6 7	
66	.....	265
.....	2003 120 ..2003 11 17	
67	.....	269
.....	2014 122 ..2014 9 26	
68	.....	271
.....	2018 2 ..2018 1 4	
69	.....	275
.....	2018 28 ..2018 2 13	
70	.....	276
.....	2018 19 ..2018 03 08	
71	.....	277
.....	2017 61 ..2017 12 25	
72	.....	283
.....	2007 2 ..2007 1 10	
73	.....	285
.....	2012 69 ..2012 6 11	
74	.....	288
.....	2013 375 ..2013 11 25	
75	.....	290
.....	2016 198 ..2016 11 18	
76	.....	295
.....	2014 8 ..2014 5 5	
77	.....	297
.....	2016 53 ..2016 12 9	

78		..... 313
.....	2017 62 ..2017 12 26	
79		..... 327
.....	94 ..2018 1 3	
80		..... 334
.....	2007 1 ..2007 1 10	
81		..... 335
.....	2015 150 ..2015 8 20	
82		..... 336
.....	2016 125 ..2016 8 1	
83		..... 338
.....	2016 320 ..2016 8 8	
84		..... 339
.....	2016 123 ..2016 10 10	
85		..... 340
.....	2017 26 ..2017 6 30	
86		..... 343
.....	2013 189 ..2013 10 29	
87	2018–2019	..... 344
.....		
.....	2017 208 ..2017 11 13	
88		..... 349
.....		
.....	2013 18 ..2013 1 31	

89		..... 357
.....	2016 99 ..2016 6 29	
90		..... 361
.....	2016 205 ..2016 11 25	
91		..... 363
.....	2015 32 ..2015 10 30	
92		..... 369
.....	2015 33 ..2015 10 30	
93		..... 373
.....	2015 37 ..2015 12 2	
94		..... 378
.....	2016 50 ..2016 12 2	
95		..... 381
.....	2016 51 ..2016 12 2	
96		..... 385
.....	2016 60 ..2016 12 26	
97		..... 389
.....	2017 63 ..2017 12 26	
98		..... 395
.....	2016 45 ..2016 11 22	
99		..... 396
.....	2017 57 ..2017 12 25	
100		..... 397
.....	2017 58 ..2017 12 25	
101		..... 398
.....	2017 59 ..2017 12 25	

102	.....	401
.....	..1994 3 22	
.....	..2014 8 31	
103	.....	416
.....	..1995 11 2	
104	.....	425
.....	..1999 8 30	
105	.....	433
.....	183 ..2011 12 20	
.....	676 ..2017 3 21	
106	.....	446
.....	2018 16 ..2018 3 27	
107	.....	447
.....	..1996 3 17	
.....	..2017 9 1	
108	.....	455
.....	..1999 4 29	
109	.....	462
.....	177 ..2007 5 29	
110	.....	470
.....	2002 21 ..2002 7 24	
111	.....	481
.....	2015 9 ..2015 5 1	
112	.....	486
.....	..1993 9 2	
.....	..2017 11 4	
113	.....	491
.....	2014 1 ..2014 2 21	
114	.....	514
.....	1582 ..2013 7 1	
.....	1707 ..2017 2 28	

115	.....	517
.....	41 ..1995 11 23	
.....	86 ..1998 12 3	
116	.....	519
.....	2007 13 ..2007 12 24	
117	.....	526
.....	2011 19 ..2011 11 28	
118	.....	559
.....	2015 11 ..2015 5 11	



2002 6 29  
31

2014 8











( )

2003 1 1

( ) 3  
( ) 3  
( ) 3  
( )  
  
( )

( )  
( )  
( )  
( ) 3  
( )

3

( )  
( )  
  
( )  
( )  
( )  
( )  
( )  
( )

5

2%

5

5

15

5

15

3

5

10%

2

5

2

2

3

( )

( )

( )



( )  
( )  
( )  
( )  
( )  
( )  
( )

( )  
( )  
( )  
( )  
( )  
( )  
( )

10%

( )  
( )  
( )  
( )  
( )  
( )  
( )

5                      10  
25

( )  
( )

( )  
( )  
( )

2000 2

( )  
( )

( )  
( )

( )  
( )  
( )  
( )  
( )  
( )

5‰

1 3

( )

( )  
( )  
( )

( )  
( )  
( )

2000 2

2 5

2 5

2 5

2015 3 1

2015 295

2015 352

( ),

( ),

2015 2282

( ),

( ),

“

:

(

2015 736 )

“

”

”

:010-68553724

2015 12 2

2015 9 7

2015 736

s





2009 4 10

2009 49

2009 35





“ ”

“

”

“ ”

“

”

2018 14

.....

2018 4 25

“ ”

2014 63

2015 63

14 2016 39

1000

PPP

PPP

3

2

”



2015 63

.....  
..... 2015 8 10

2017 6

2016 6



62

2015 163

32

47

2015 63

<

> <

>

2013 18

16 60

2013 189



2014 165

“

”

“

”

2015 9 15

14 39

2015 63

2016 8 1

2016 6 24

2015 63

,

7

2017 1055

1 1

“

”

39

2016 2024

“

”

2015 63

“

XX

· XX

”

2016 8 1

2018 4

2015 63

2017 1055

“ ”

[www.scgzy.gov.cn](http://www.scgzy.gov.cn)

2017

7 1

“

”

“

”

“

”

“

”

“

”

“

”

“

”

“

”

“

”

2015 9

39

2016 2024

2014 165

2014 63

2014 61

“

”

“

”

1

“

”

“

. XX

”

“

”

2011 15

”

“

2018 1 9

2015 7

.  
.

.....  
.....2015 4 21

2007 51

2006 28

2007 15



2004 185

5

2004 30

15

2004 12 17

2004 30

“ ”

“ ” “ ”

2007 7 30

<http://www.ccg.gov.cn/>

<http://www.cem>

2017 3

( )

(

)

“ ” “ ”  
21 “ ”  
“ ”

19 “

” ( “ ” )

“ ”

“ ”

010-68551839

010-63819312-857

.1.

.....2 17 18 “

” 19 20 “

” ( )

2017 1 9

2007

2006

2005

2006 90

2007 119

2005 22

2006-2020

2006 6

2007 12 27

"

"

gov.cn/

<http://www.ccg.gov.cn/>  
<http://www.cgn.cn/>

[http://www.mep](http://www.mep.gov.cn/)

2020

2006 6

2006

2008 1 1

2007 1 1

2006 10 24

1

2

3

5‰ 10‰

1-3

10%

10%



( )

2008 248

( )

( )

( )

( )

2007 12

( 2007 119 )

2007 119

( )

(

)

( )

( )

2007 119

2007 119

2007 12 27

2010 48

.....  
.....2008 7 9

(2009 33 )  
( )

( )

2010 4 28

cn

<http://www.ccg.gov.cn/>  
<http://www.cnii.com.cn/>

<http://www.ndrc.gov>



2011 181

2009 36

2011 12 29 .

60%

30%

6%- 10%

30%

2%- 3%

2011 124

( 2009 36 )

2012 1 1

( )

2011 181

1.

.....

2011 300

==

31

2 2012 1 1 2013 12

2

.....

.....

.....

( )

2011 11 30

..

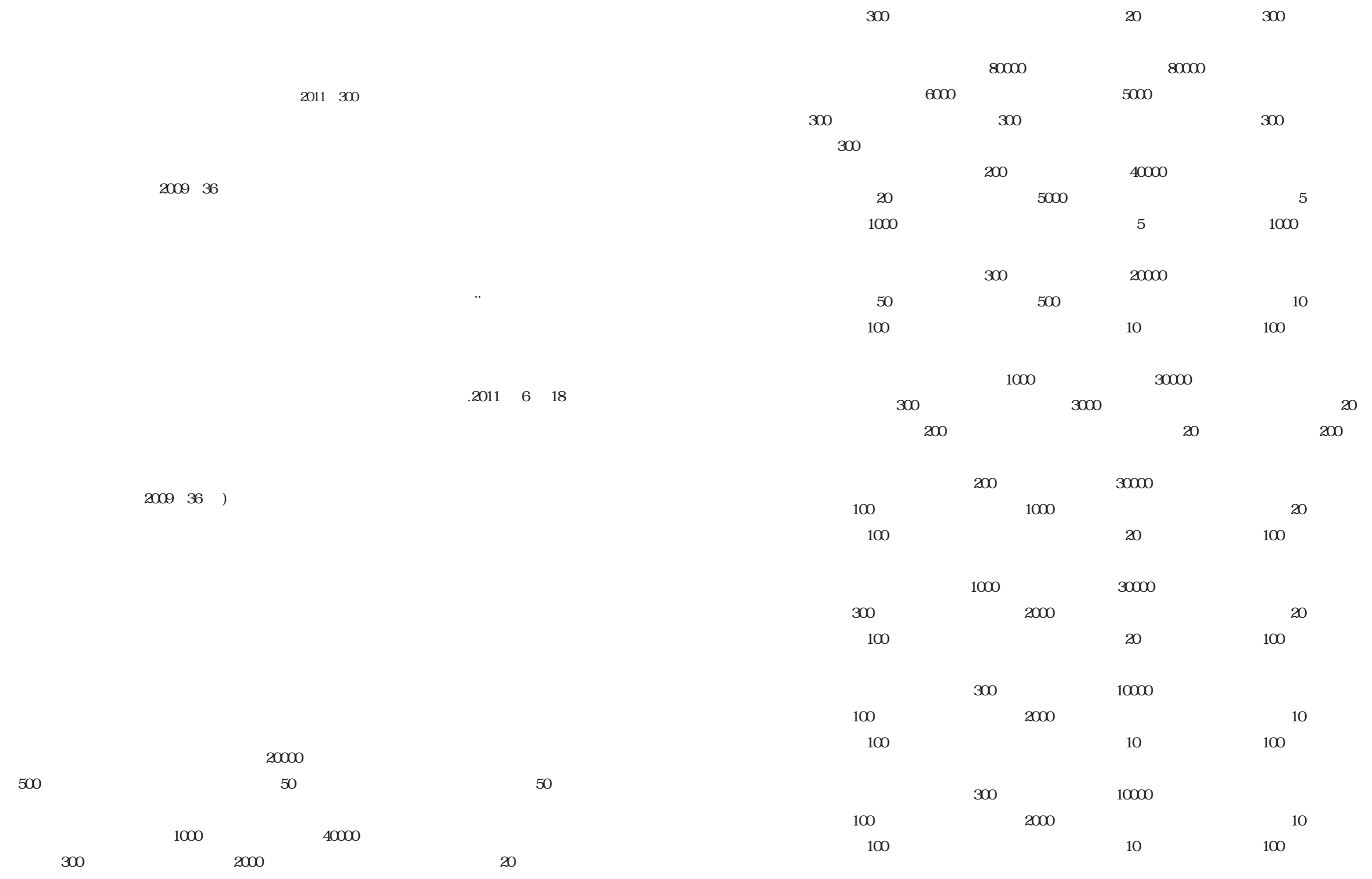
.....

.....

010- 68552920,68552233( );

.....

...2011 9 5



2006 47

2006—2020

2006 6

2014 68

“ ”

2003 7

30%

2006 6 13

2014 6 10

2017 141

2017 10 1

25% 25%

10 10

.....2017 8 22

1 8

2016 35

6%- 10%

>

2016 48

<

2016 9 6

30%

2%- 3%

>

2016 48

<

60% 30%

2015 123

3

<

>

2007 119  
2008 248

2016 9 20

5

5

1

3

1.



2

1

.... ..

..	
..	
	..
	... ...
	... ..

30

5

,

- 1.
- .....2
- .....3
- .....4
- .....5
- .....6

.....  
 .....2015 11 19

- 1 “ ” “ ”
- .....2

	.....			
	1			
	2			
	.....			
	3			
	.....		.....	
	.....		.....	

1  
.....2

	.... ..
	..... ..
	.....

1      “ ”      “ ”  
.....2





1

1		
2	X	.
3		
4		
5		
6		
7	CT	
8		
9		
10	XRD	
11		
12		
13		
14		
15		
16		

2

1		
2		
3	(	
4		
5		

6		
7		
8		
9		
10	.	
11		
12		
13		
14		
15		
16	.	
17		
18		
19		
20		
21		
22		
23	X	
24		
25		
26		
27		
28		
29		
30		
31		
32		
33		

34		
35		
36		
37		
38		
39	-	
40	X	
41	-	
42		
43		
44		
45	-	
46		
47		
48		
49	PVT	
50		
51		
52		
53		
54		
55		
56		
57	CZI	
58	LaBr	
59	PLC.	
60		
61		

62		
63		
64	ASD	
65		
66		
67		
68		
69	/	
70	-	
71		
72		
73		
74	CT	
75		
76		
77		
78		
79		
80		
81		
82		
83		
84		
85		
86		

3

1	HAVE1	
2	ESD-	
3		
4		
5	IABP	

4

1		
2		
3		
4	X	
5		
6		
7		
8		
9		
10		
11		
12		
13		
14	PCR	

15		
16	DSA	
17		
18	PET- CT	
19	ECT	
20		
21		
22	ERCP	
23	OCT	
24		
25		
26		
27		
28		
29		
30		
31		
32		
33		
34	CT	
35	HIV	
36		
37		
38		
39		





“ ”

—

---

---

---

“ ”

2020

“ ”

2014 37

2013 96

2013 9 26

“

”

2014 4 14





2017 87

2013 96

2015 3

2013 96

2015 1 1





2015

2016

2017

2020

6

7.

1.

1.

2

3

4

5

6

2

3

4

5

1

2

3

4

5

“

”

,

“ ”

2014 66

2014 67  
2014 37

“ ”

“ ”

“ ”

2014 7 16

/ / /

1

2

1

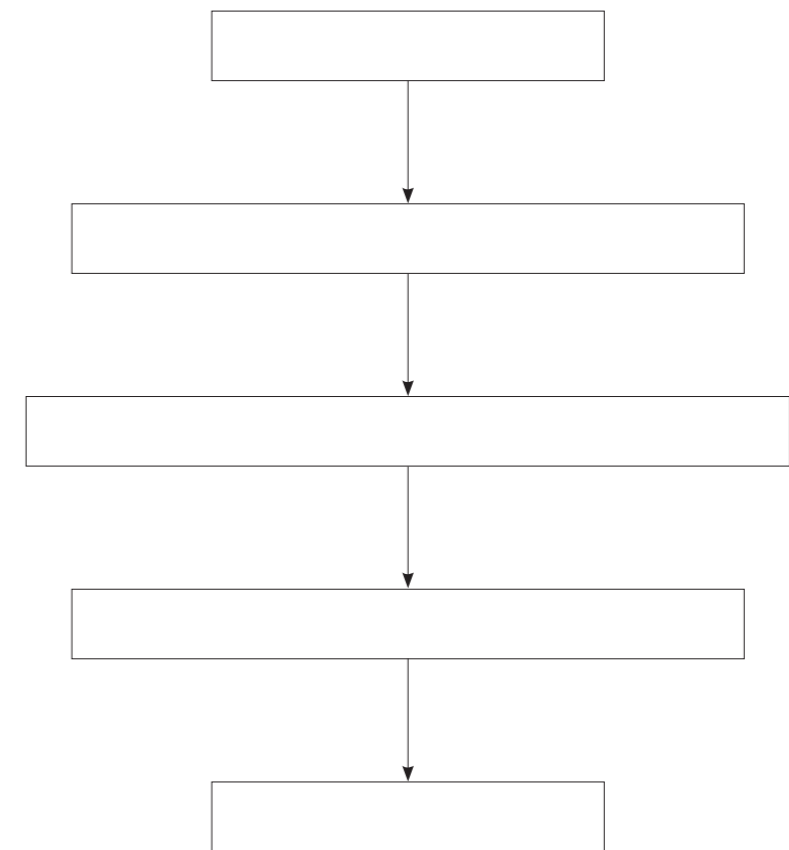
2

3

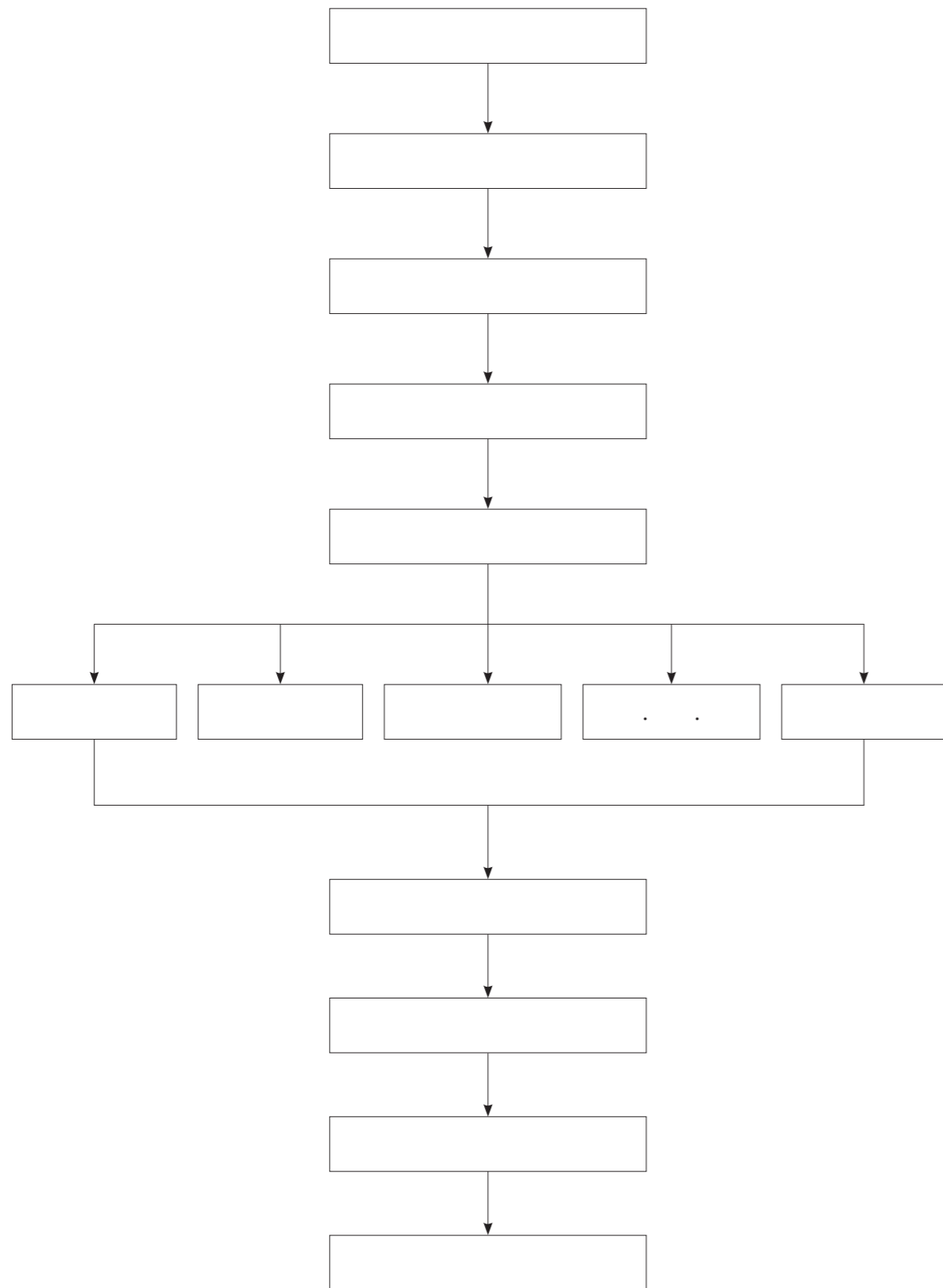
- 1
- . .....2
- . .....3
- . .....4
- . .....5

2014 8 18

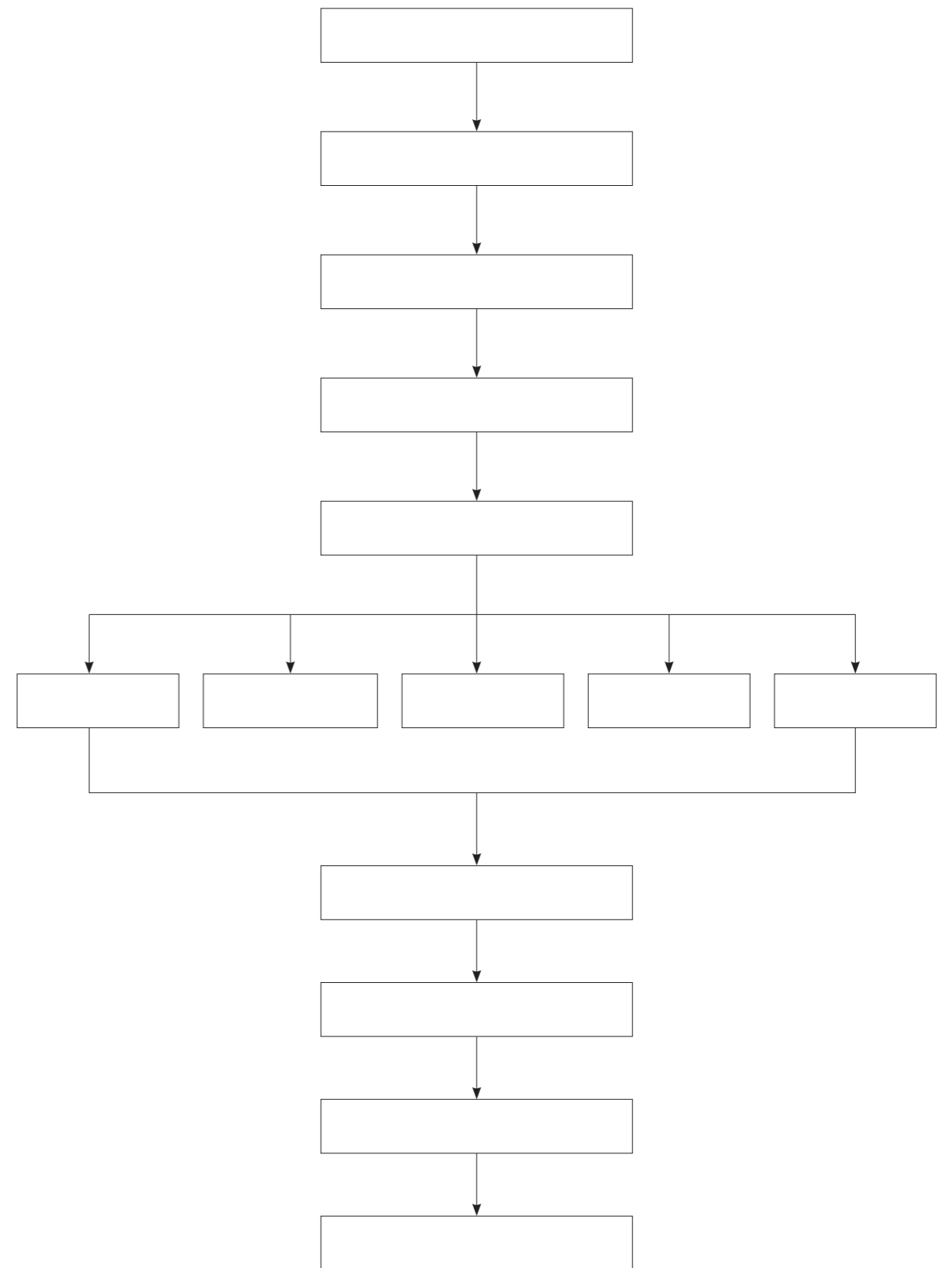
1



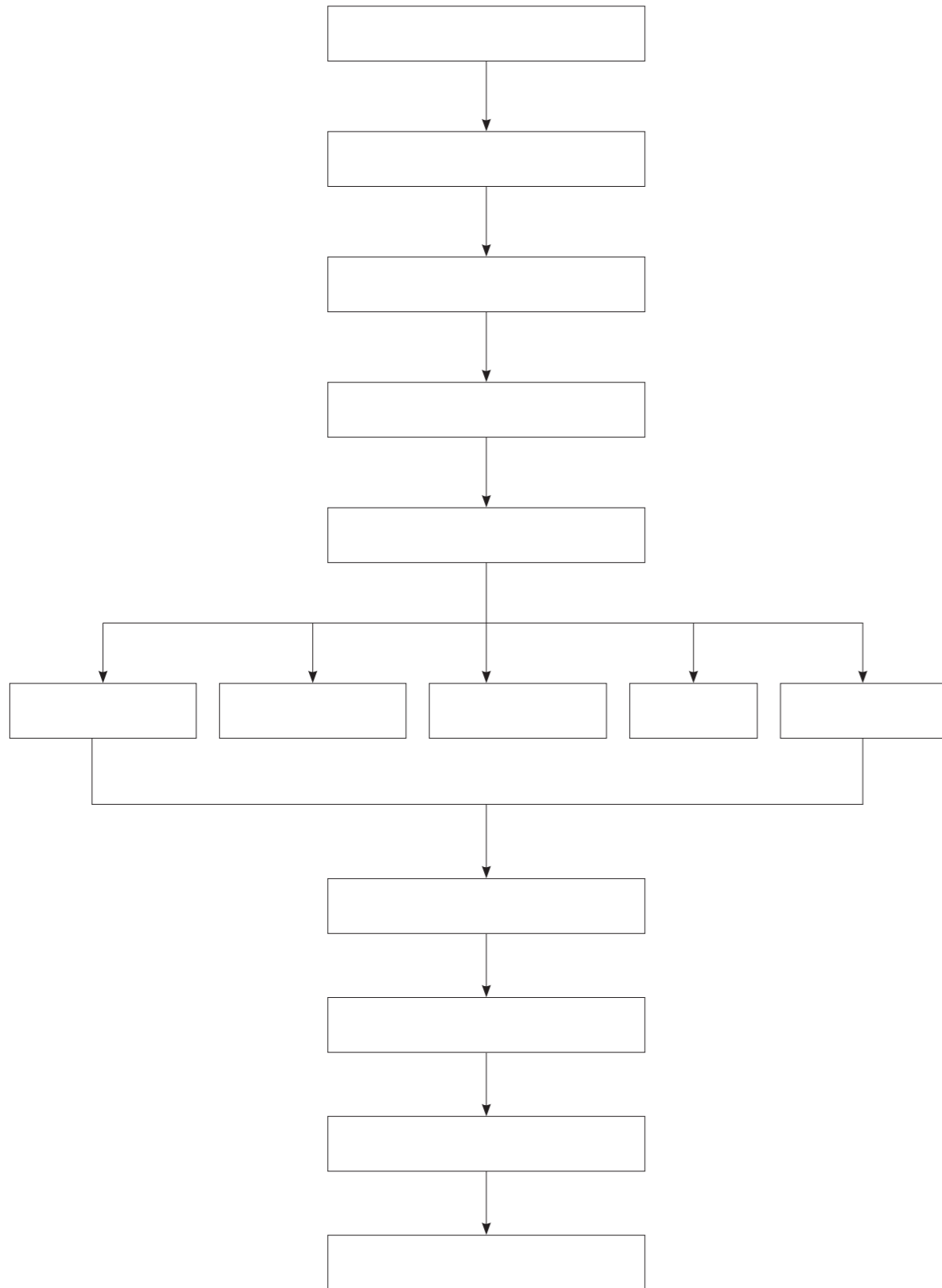
2



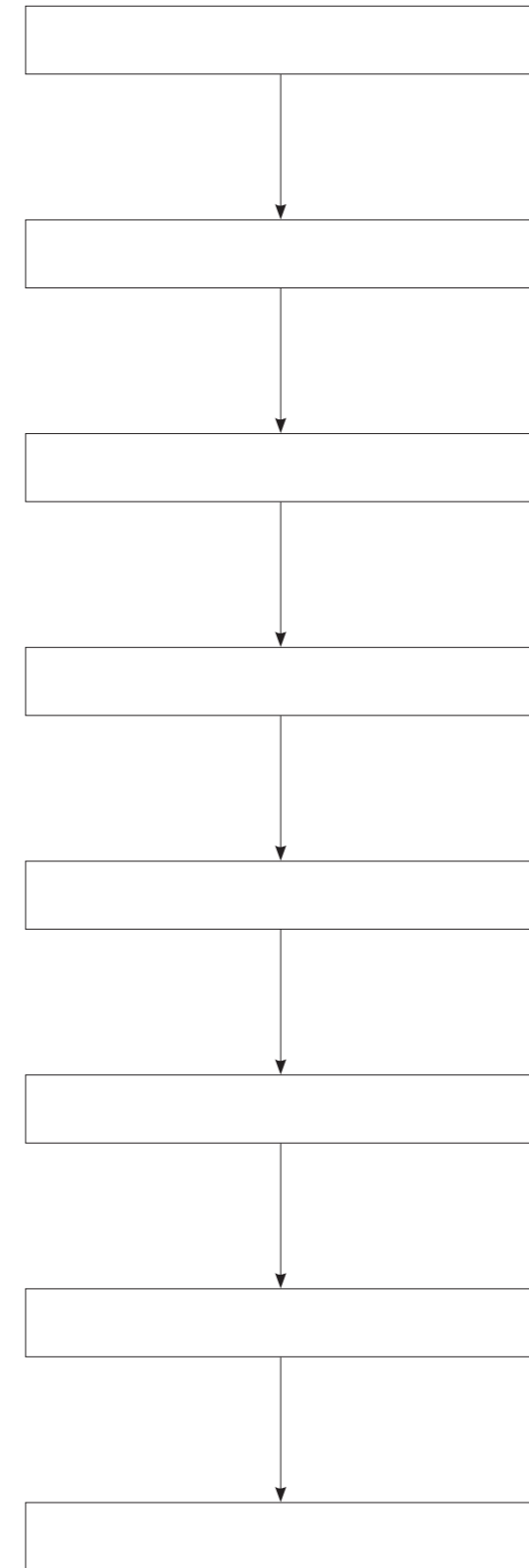
3



4



5



**PPP**

2015 42

2015 5 19

“ ”

Public-PrivatePartnership PPP

2013 96



ROT

— — TOT — —

— — BOT — — BOO

2014 215

“ ”

2014 12 31

PPP

PPP

PPP

PPP

PPP

PPP

PPP

PPP

PPP

PPP

PPP

PPP

PPP

è

P

5

2

2017 50

30

2017 17

2015 42

PPP

PPP

PPP

PPP

PPP

PPP

2

PPP

PPP

PPP

2%

PPP

10%

---

PPP

PPP

6

PPP

PPP

PPP

---

PPP

PPP

PPP

,

“ ”

PPP

PPP

PPP

PPP

2017 1  
PPP

PPP

,

“ + + ”

PPP

PPP

“ + ”

PPP

PPP

PPP

1

PPP

PPP

“ PPP ” PPP PPP PPP  
PPP PPP PPP

PPP

PPP

PPP

PPP

PPP

PPP

PPP

PPP

PPP

PPP

PPP

PPP

2017 5 31



2018 1 1

IPv6

30%

10%



2006 1

( ) ( ) ,

:

( 2001 57 )

2004 41 ) ,

(

.. ..

:

,

,

,

.....

2006 3 30

2014 63

2014 63

2015

2014 65

8662797  
61323079

3 5 7 9 11

“ ”

3  
4 6 8 10 12 5

2014 12 8

“ ”

120

10

2014 65

2014 9 1

1 “ ”

2

50

1

2

2

1 “ ”

2

2

“ ”

1 “ ”

2 “ ”

3 2 “ ”

2

“ ”

3

2012 28

1

2018 14

“ ”

“ + ”

2

“ ”

3

“ ”

4

(

200 50 )

5

“

100

6

”

10

61323079

86662797

86727173 86728005

250674919

16

11

“ ”

www.ccgp\_sichuan.gov.cn





20%

2017 6 21

2

( )

2017 3

:

( 2016 47 )

( 2016 50 )

2017 4 28 .





87

3

,

5

5

3

3

15

15

3

3

5

5

20

3

5

1000

7

5

10%

30%

$$= \left( \frac{F_1 \times A_1 + F_2 \times A_2 + \dots + F_n \times A_n}{F_1 + F_2 + \dots + F_n} \right) \times 100$$

$$\frac{A_1 + A_2 + \dots + A_n}{(A_1 + A_2 + \dots + A_n - 1)}$$

:

;

30

e

2

5

5

2

1



74

2013 10 28

2014 2 1

2013 12 19

( )

” .. “ ” “ ” “ ” “ ” “ ” “

2017 10 1

2004 8 11

18

3  
2/3

5

1

3

3

50%

2%

2

30

5

5

3

3

3

3

5

3

3

3

2

5

3

3

3 6

1 3

2014 214

PPP

3

2014 12 31

50%

10

5

5

5

2%

A

3

23

1



$$\begin{aligned}
 & \frac{(\quad) \cdot 10 \cdot 30}{(\quad) \cdot 30 \cdot 60} \\
 = & \quad / \quad \times \quad \times 100
 \end{aligned}$$

3  
2

5

5

5      2

2

30

3

2014 214

2015 124

<

“ ”

>

2

1

2015 6 30

2015 111

2017 46

2015 16

“ ”

2017 19

” “ ”

“

74

2015 5 28

2017 7 13

2003 38

2015 17

2003 9

2002

..  
2015 7 22 .

2003 4 14

3

3

5

1

7

30

5

- 1.
- 2.
- 3.
- 4.
- 5.
- 6.
- 7.
- 8.

.....  
 .....  
 XXX                      XXX                      XXX

/                      XXX                      /                      /                      /  
 ( )

.....  
 .....                      .....  
 .....  
 .....

XXX  
 .....    .....    .....

		( )	( )
	. . . . .		
		.	
		.	
		.	
		.	
		. ;	
		.	
		.	

XXX		
..		
..		
..		
..	3	
..		
.....		
.....		

:1 " " " " " "

.....2 " " " " " "

.....3 ...

3

XXX      .. .. ..      XX      ..

XXX      /      /

XXX XXX XXX

/

,

XXX

.....

4

XXX XXX  
XXX

.....

XXX

XXX

.....

5


6

:

.....

.....

XXX

.....

.....

.....

.....

.....

7

.....

.....

.....

.....

.....

.....

.....

37

.....

610016

.....

2015 27

2015 9 16

CA

2015 3 1  
31

2015 10

2015 135

028 86727173 028 86728005 .

..  
2015 9 17

2

7

500

[www.sczfcg.com](http://www.sczfcg.com)

“ ”

CA

,



2015 36

658

74

2015 11 2

658

74

/

/

/ /

50%

2

2

2

5

3

3

10

23

3

5

5

1

”

“

3



2

5

3 2

30

2016 1 1

5

2

7

2018 20

“ ”

.10 .31.

30

.30

3

“ ”

“ ”

,

4

5

“

”

“

”

1.

2

.3 .31.

-

“

.15

3

”

1.

“ ”

1.

2

4

5

“ ”

1.

2

3

4

1.

~~028 86725207 86725155~~

2

~~028 86727173 86728005~~

3

~~028 86725927 86662797~~

..

..  
2018 3 12



“ ” “ ”

1.

2

3

4

5

6

“

”

“

”

“

”

2017 12 19 .

“

”

20

7



1

3

2004 9 11  
2000 7

2000 9 11

“ ”

“ ”

2015 3 1

2015 10 31

10

2015 7 17 ..

2017 86

( )

2017 9 1

( )

( )

( )

( )

( )

(www.ccg.gov.cn)

2015 135

( )

( )

( )

( )

( )

( )

( )

2017

( )

( 2015 135 )

2017 4 25

2015 135



2017 21

2017 86

2017 6 7

2017 9 1

cn)

[www.sczfcg.com](http://www.sczfcg.com))

([www.ccgp-sichuan.gov](http://www.ccgp-sichuan.gov).



2003 120

“ ”

“ ”

15

95  
90

2014 122

2014 2014 31  
31

2014 31

2015 1 1

[www.ccg.gov.cn](http://www.ccg.gov.cn)

2015 1 31

2018 2

” “

”

“

2018 1 4

2014 9 26

,

10

;

5

5

5





2017 61

2018 19

658

2018 2

2017 11

2018 28

...

2018 3 1

“ ”

,

2017 12 25

2018 3 1

2018 5 1

10

10

028 8668626 86723190

2018 3 8

( )





2007 2

18

$$10\% \quad 30\% \quad 60\% \\ 30\% \\ = ( \quad ) \times \quad \times 100$$

“ ”

2012 69

2007 1 10

1:3

2

2012 6 11

2013 375

2004 80

“

”

18

400-810-1996

010-68552389

2013 119

2013 11 25

Ukey

<http://www.ccg.gov>

cn/

Ukey

2

1:3

30

2016 198

, , , ( ),

:  
:

2016 11 18 .

, ( )  
( )

, , , ,

:  
( ) , , , ;  
( ) 8 ,  
;  
( ) ;  
( ) ,  
;  
( ) 70 , , ;  
( ) , ( ) ( )  
( ) , ( ) ,

:  
( ) ;  
( ) ;  
( ) ;  
( ) ;  
( )

, " ,  
:  
( ) ;  
( ) ;  
( ) ;  
( )



( )

( )

( )

2

5

5

2000

2

2

5

2

5

2

5

( ) ;  
 ( ) ;  
 ( ) ;  
 ( ) ;  
 ( ) ;  
 ( ) ;  
 ( ) ;

2014 8

2003 119

2014 3

2017 1 1 . 2003 11 17  
 ( 2003 119 )

	1	250	1	1
100	30	1	30	50
		20%		

200 .

2016 53

658  
2014

63

2016 12 9

2014 5 5

( )

1

3

..





5

1  
2  
3  
4

1

2

1

2

2

3

4

5

( )

1

2

3

4

5

6

7

3

1

2

3

4

1  
2

3

4  
5

6

7

3

5

7

1  
2  
3  
4

1  
2  
3  
4  
5  
6

1  
2  
3  
4  
5



1  
2  
3  
4

1  
2

3

4  
5

6

7

3

5

1  
2  
3  
4  
5  
6  
7

1

2017 62

2016 198

2017 12 26

2017 1 20 5  
2012 54

- .1.
- . .....2
- . .....3
- .

2016 198

, , ,

“ ”

( ) , , , ;  
( ) 8 ,

60

70

2

60

2

2016 198

5

,

,  
 ,  
 ..  
 .  
 “ ”  
 “ ”  
 “ ”

3

“ ”  
 2  
 ,  
 ,  
 “ ”  
 ”

2

,

,

“

”

5

,

..

(

,

,

,

3—6

- ( )
- ( )
- ( )
- ( )
- ( )
- ( )
- ( )

3

2018 2 1 5  
 2014 3

1





94

2018 3

1

...  
2017 12 26

7

7

15

,

7

30

5

5

3

3

8

5

30

“ ”

“ ” “ ”

2018 3 1

2004 8 11

20

12

1 3

;

;

2007 1

2015 150

“

”

2015 8 20

5

2007 1 10

cn

www.ccg.gov.cn

2016 125

1

2014 21

2014 2020

2016 33

2015 51

2

“ ”

3

2014 3062

4

2015 2045

2015 3062

2016 141

2016 1001

2016 8 1

“ ” www.creditchina.gov.

2016 320



2017 26

235

“ ” “ ” “ ”  
“ 103050199 ”

2017 6 30

2013 189

010-68552389

2013 10 29

2017 208

2018—2019

2017 11 13

A		
A02010103		2
A02010104		
A02010105		
A02010107		
A02010201		2
A02010202		2
A02010601		
A0201060901		
A020108		2
A02019901	...	10 20 30

A020201		
A020202		
A020204		
A020205		
A02021101		2
A020305		
A020306		
A020310		5
A02051228		20
A0206180203		
A02081001		( )
A02091001		
A02091102		
A06		5
A090101		2
C		10 20 30
C0202	...	
C0403		
C050301		
C050302		
C0801		
C0803		

C081401		
C1204		20 30 50
C15040201		

2013 189 “ ”

.  
.

40 30 20 60 10 50  
120 80 200

2013 18

1.  
2

..

.  
2013 1 31

.  
1

2012 3

”

“ ”

“

”

“

”

1

2

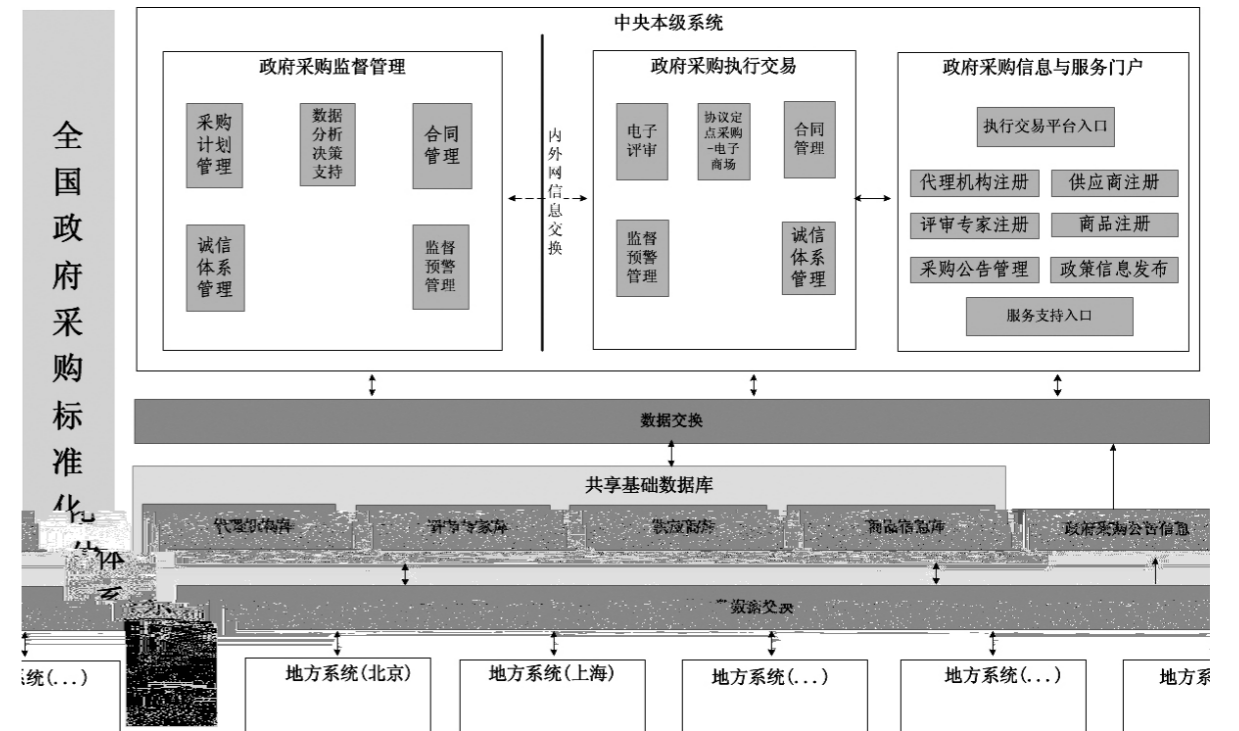
“ ”

3

4

“ ”

“ ”



“

”

“

”

“

”

“

”

1

,

1

2

2015

5

1

2

1



2

“

”

( )

3

“

”

4

( ) ( 2012 21 )  
( 2015 24 )

1.

2

3

“

”



3

4.

5.

( )

( )

( )

( )

( )

( )

( )

( )

( )

( )

( )

( )

( )

,

1000

300

100

50

300

1000

100

500

50

300

3

1000

500

300

5

3

2

3

2016 1 1

5

.....

.....

.....

/

/ /

.....

.....

.....

.....

.....

.....

.....

.....

.....

.....

.....

.....

2015 33

658

2014 63

2015 10 30

658

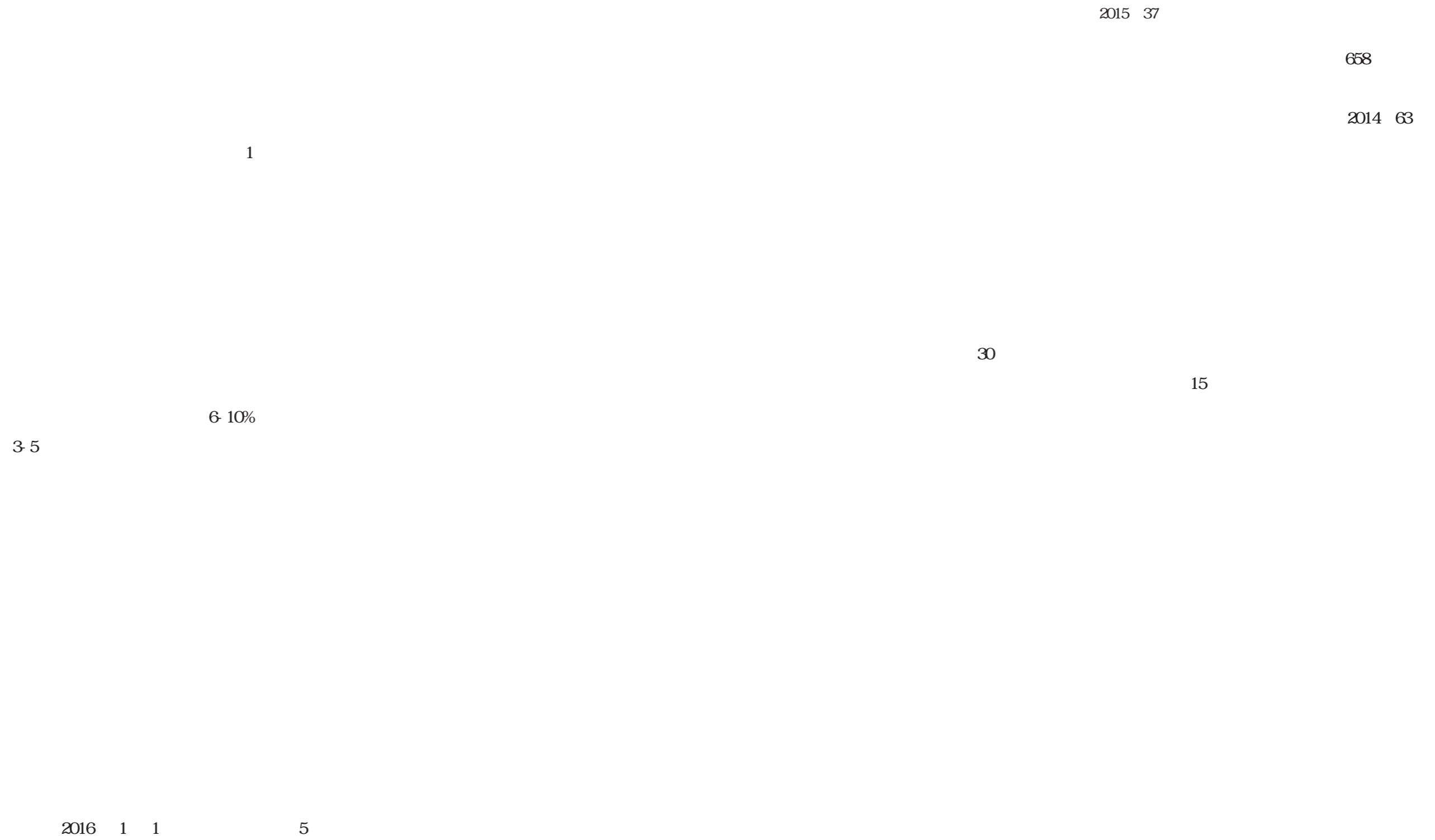
2014 63

...

.

.







2

$\hat{k}$

2016 50

2016 99

2014

1

2

3

4

5

6

7

63

1

2

2

3

4

2016 51

658

2014 63

2016 12 2

2016 12 2

..

2016 60

2016 99

.....  
2016 12 26

2017 1 1 5

2016 99

” “ ”

.....

6

7.

2

8

9

10

11.

.

1.

2

3

4

5

“ ”

2017



2017 63

87

2016 53

“

”

“

”

86

2016

198

“

”



2016 45

2011 63

“

[www.sczfcg.com](http://www.sczfcg.com)

-

”

.

2016 11 22

2017 57

PPP

“ www.sczfcg.com

-

2017 12 25

2017 58

PPP

“ www.sczfcg.com

-

2017 12 25

2017 59

“

[www.sczfcg.com](http://www.sczfcg.com)

-

”

2017 12 25

1994 3 22

2014 8 31

1 1 12 31













1995 1 1

1991 10 21

1995 11 2

“ ”  
“ ”

“ ”  
“ ”

“ ”

“ ”

“ ”

“ ”

“ ”

“ ”

“ ”

“ ”

“ ”

“ ”

“ ”

“ ”

12 10

“ ”



“

”

“ ”

1999 8 30

2017 12 27

“

”







613

2011 11 30

183

2012 2 1

2011 12 20

2000 1 1





3

2%

5



3

3

3

3

3

10

1 3

3 2

30

3

10

5

1 2

3 2

30

3000 5

10‰

10‰

5‰ 10‰

5‰ 10‰

2012 2 1

16

200

10%

.. :

..  
..  
..

:

:

..

:

..

:



:

:

..

:

1999 4 29

2009 8 27

2017

9 1

1996 10 1

1997 12 31

:

:

:

:

! !  
! !  
! !  
! !  
! !

É& x@ÚfñbUÀ@B;ÓE-@E"JEžüBáxK@5@eE-xÄ9@Ú ß Æ 9 9 1 = æ!=" KŽ

“ ” “ ”

:

10 9

1999 10 1

1990 12 24

1994





10

10

2

2

60



60

60

2002 6 4

1224





“ ”



1648

2015 5 1

2015 4 20

2015 4 22





2015 5 1

2015 5 1

2015 5 1

1993 9 2

2017 11 4



2018 1 1

2013 10

2004 13

2013 12 9  
2014 4 1

2014 2 21

1



3

3

4

5

/

6

/

7

8

9

10

11

12

13

3

“\*”

“\*”

1

2

0.5%

1%

“\*”

15

2

10

3

3

“\*”

3



5

8  
5

$\frac{2}{3}$

3

$\frac{1}{3}$

1000

$\frac{1}{2}$

3

3

3

60%

3

$\frac{1}{3}$

3

48

“\*”

“\*”

“\*”

“\*”

“\*”

3

2

3

3

“ ” “

15

3

4

30

5

3

30

10%

5

10

10

10

10

3

23

Q5% 1%

3

3

6

2

3

1 2

“ ”

“ ”

CIF CIP DDP

ICC

2014 4 1

2004 13

2013 7 1  
1707

1582

2017 1 16



1995 11 23

41 , 1998 12 3

33

2007 13

427

23

1999 10 2  
1999 59

1.  
.....2

1

.  
.....  
.....

.....  
.....

32

5

.....  
.....

.....

.....

.....  
.....  
.....

.....

.....  
.....

.....

.....  
.....

.....  
.....  
.....

3

32

3

5

3

.....  
.....

.....

42

==

.....  
.....

.....

3

.....

.....

.....

.....

.....

.....

.....  
.....

.....  
.....

.....  
3

15

60 .....

xxx

.....  
.....  
.....  
.....  
.....  
.....  
.....

.....

- 1.
- .....2
- .....3
- .....4.....

.....  
.....  
.....

3%

51 .....

.....

	.....

1  
..... xxx xxx  
2

.....

2

“ 3 ” “ 5 ”

” 23 “

2

2011 19

< >

2007 82

3

4

5

6

7

8

5

1

9-1

9-2

13-2

14

9-2

10

11

12

15

16

13-1





24

27

28

25

60

26

2012 1 1

1

2

3

4

5

6

7

8

9 1

9 2

10

11

12

13 1

13 2

14

15

16

17

18

19

20

21

22

23

24

25

26

29

30

27  
28  
29  
30

1

\_\_\_\_\_

---

\_\_\_\_\_

\_\_\_\_\_

\_\_\_\_\_

---

\_\_\_\_\_

\_\_\_\_\_

---

\_\_\_\_\_

\_\_\_\_\_

2

\_\_\_\_\_

\_\_\_\_\_

\_\_\_\_\_

---

\_\_\_\_\_

1. \_\_\_\_\_

2. \_\_\_\_\_

\_\_\_\_\_

\_\_\_\_\_

\_\_\_\_\_

\_\_\_\_\_

---

3

\_\_\_\_\_

\_\_\_\_\_

\_\_\_\_\_

\_\_\_\_\_

\_\_\_\_\_

\_\_\_\_\_

\_\_\_\_\_

\_\_\_\_\_

\_\_\_\_\_





.....  
.....

7

.....

32

5

.....  
.....

.....  
.....

8

.....  
.....

1.

2

.....  
.....

9.1

.....  
.....  
.....

( )

.....

.....



---

		.				
		.				
		.		.		
		.		.		
		.				.
		.				.
		.				
		.				
		.		.		.



XX

.. \_\_\_\_\_  
 .. \_\_\_\_\_  
 \_\_\_\_\_  
 \_\_\_\_\_  
 \_\_\_\_\_  
 \_\_\_\_\_  
 \_\_\_\_\_  
 \_\_\_\_\_  
 \_\_\_\_\_

( \_\_\_\_\_ )..

32

5

XXX

XXX

.... XXX

42

3

XXX

XXX

.... XXX

.....

.....

..... .....

..... .....

..... .....

..... .....

..... .....

..... .....

..... .....

..... .....

..... .....

..... .....

..... .....

..... .....

	..... .....
	..... .....
	..... .....
	..... .....
	..... .....

XX

( ):

( ) , ( ) :

: .....

: .....

: ( )

: ( )

: ( )

: ( )

( ) , 3 ,

( ) , ,

3 ,

( ) ( ) ,

3

( ) , ,

: ( )

: )

: )

.....  
.....  
.....

.....

.....

.. ..

.....

.....

.....

.....

.....

.....

.....

.. ..

.....

.. ..

.....

.....

/

\_\_\_\_\_

XX

.....

.....

.....

.....

.....

.....

XX

.....  
.....

.....  
.....

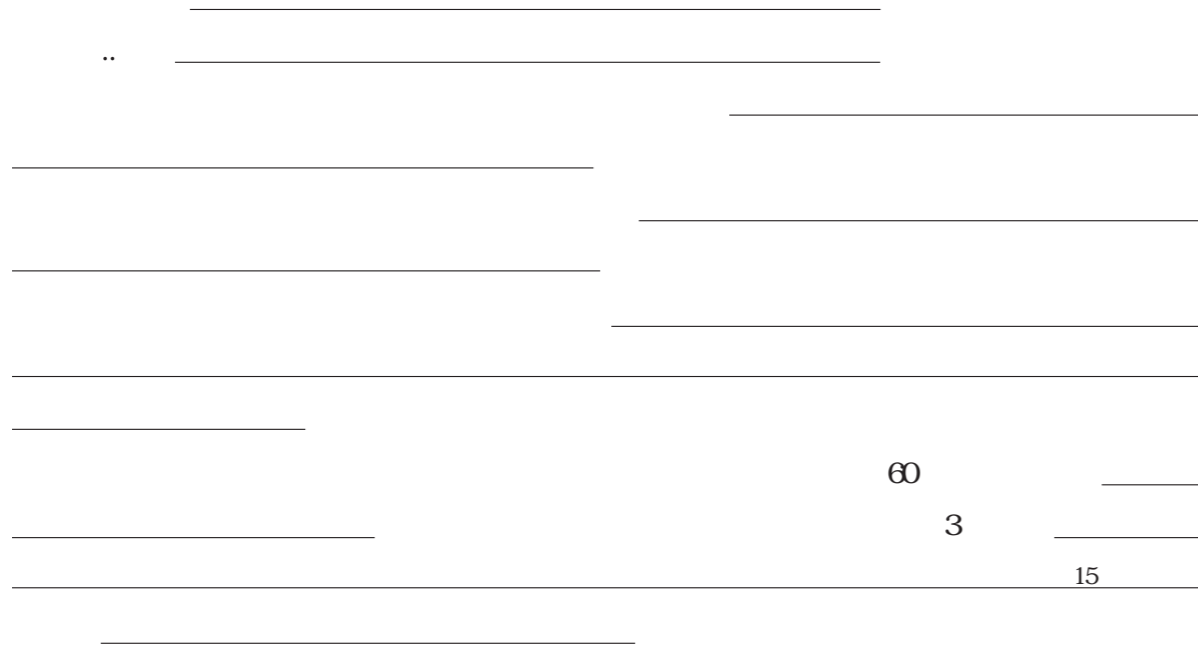
	.....
	.....
	.....

.....  
 .. .....  
 .....  
 .....  
 .....  
 ..  
 .....

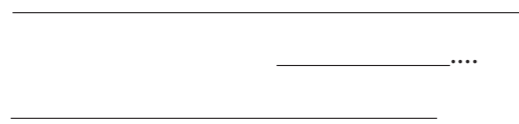
.....  
 .....

22

XX



23



24

	.....
	.....
	.....
	.....

1

XXX(

25

XX

.....  
 .....  
 .....

.....

.....

.....  
 .....

.....

XX

.....

.....

.....

51

3%

.....

.....

XX

.....

.....

.....

.....

.....

.....

.....

.....

.....

.....xxx

.....

1. ....

.....2 .....

.....3 .....

.....4xxx .....

.....

.....			
..			
	.....		

..		..	..

2015 11

2003 19

2005 3

2006 9

2007 16

2007 25

2007 29

2007 31

2009 30

2009 37

2009 36

2011 91

2015 5 11

